

éthéré

*Premium hair jewellery*





We are on a mission  
to bring back the beauty  
and grace of hair jewellery.





## The story

Two decades ago, while strolling through the vibrant Saint-Ouen street market in Paris, a beautiful metal hair clip caught my eye - a perfect gift for my wife. As an experienced real estate professional, little did I know that this single metal accessory would spark a passion to revive the long-lost art of hair jewellery, leading to the creation of éthéré.

Over the years, as I traveled the world, I searched for similar high-quality hair accessories for my wife. I was surprised to discover that sophisticated, artisan-crafted hair jewellery had seemingly disappeared from the modern world.

Hair jewellery had been a part of human culture for millennia, from ancient Rome and Greece to the Middle Ages and the Art Nouveau period. However, elegant pieces had been almost entirely replaced by cheap plastic products.

In 2021, I visited a friend in France. While discussing the lost art of quality hair jewellery, we came up with the idea to bring back the beauty and grace of hair jewellery.

And so, éthéré was born...



Robert Kantor  
CEO







## Product catalogue

- Elegance line
- Sparkle line
- Fancy line



# *Elegance line*

Hair clips



## Exquisite Artisanship

Meticulously crafted by master artisans using time-honored techniques. Each piece is diligently hand-finished with admiration for ancient traditions and unparalleled attention to detail.

Jewellery dipped in an 18k gold bath (electroplated 0,3µm), hand polished, top quality brass



Jewellery dipped in a black ruthenium bath (electroplated 0,3µm),  
hand polished, top quality brass



Jewellery dipped in rhodium bath (electroplated 0,1µm),  
hand polished, top quality brass



Jewellery dipped in an 18k rose gold bath (electroplated 0,3µm),  
hand polished, top quality brass



# *Elegance line*

Hair pins



## Enduring Heritage

While fleeting trends come and go, éthéré creates wearable heirlooms designed to be treasured forever. Exquisitely crafted to preserve luster and artistry for generations as a celebration of eternal feminine radiance.

éthéré embodies the ancient artistry of hair adornment, reborn as empowering confidence, self-expression and extraordinary elegance for the brilliant, modern woman.

Jewellery dipped in an 18k gold bath (electroplated 0,3µm), hand polished, top quality brass



Jewellery dipped in an 18k rose gold bath (electroplated 0,3µm),  
hand polished, top quality brass



Jewellery dipped in a black  
ruthenium bath (electroplated 0,3µm),  
hand polished, top quality brass



Jewellery dipped in rhodium bath (electroplated 0,1µm),  
hand polished, top quality brass



## Transcendent Design

Bridging reverence for opulent ancient crowns with modern haute couture flair. Intricately detailed yet minimalist designs exude timeless sophistication and coveted runway style.

*Sparkle line*  
Hair clips



Jewellery dipped in a black ruthenium bath (electroplated 0,3µm), hand polished, top quality brass, prong set white zirconia





Jewellery dipped in an 18k rose gold bath (electroplated 0,3 $\mu$ m),  
hand polished, top quality brass, prong set white zirconia



Jewellery dipped in an 18k gold bath (electroplated 0,3 $\mu$ m),  
hand polished, top quality brass, prong set white zirconia



Jewellery dipped in rhodium bath (electroplated 0,1 $\mu$ m),  
hand polished, top quality brass, prong set white zirconia

Jewellery dipped in an 18k rose gold bath (electroplated 0,3µm), hand polished, top quality brass, prong set white zirconia

# *Sparkle line*

Hair pins



## Artistic Brilliance

Naturally Inspired éthéré's exclusive hair jewellery collection is a true work of wearable art designed by master jewelers who approach their craft as sculptural poets. Each sculptural piece is intricately modeled after the elegant, organic shape of the freesia flower. This radiant bloom's delicate petals and fluid, twisting stems have been reinterpreted into precious metalwork through the artisans' discerning eyes and steady hands. The flowing, asymmetric designs effortlessly achieve a balance of timeless sophistication and contemporary allure.



Jewellery dipped in an 18k gold bath (electroplated 0,3µm),  
hand polished, top quality brass, prong set white zirconia



Jewellery dipped in a black ruthenium bath (electroplated 0,3µm),  
hand polished, top quality brass, prong set white zirconia



Jewellery dipped in rhodium bath (electroplated 0,1µm),  
hand polished, top quality brass, prong set white zirconia



# *Fancy line*

Hair clips

Jewellery dipped in an 18k gold bath (electroplated 0,3µm),  
hand polished, top quality brass, prong set green zirconia



## A Masterpiece, Hand-Perfected

Once the flowering silhouettes have been carefully sculpted, our jewelers embark on the delicate process of embellishing and refining every curve and texture through the art of hand-finishing. It is their diligent touch that breathes soul into the design, perfecting the ornate details down to the most subtle nuance.

This meticulous hand-embellishment is a reverential process that imparts each éthéré hair accessory with its own distinctive, one-of-a-kind character and unparalleled luster. The result is a wearable masterpiece that will radiate with effortless brilliance adorning your hair.



Jewellery dipped in an 18k rose gold bath  
(electroplated 0,3 $\mu$ m), hand polished,  
top quality brass, prong set amethyst zirconia



Jewellery dipped in a black ruthenium bath  
(electroplated 0,3 $\mu$ m), hand polished,  
top quality brass, prong set champagne zirconia

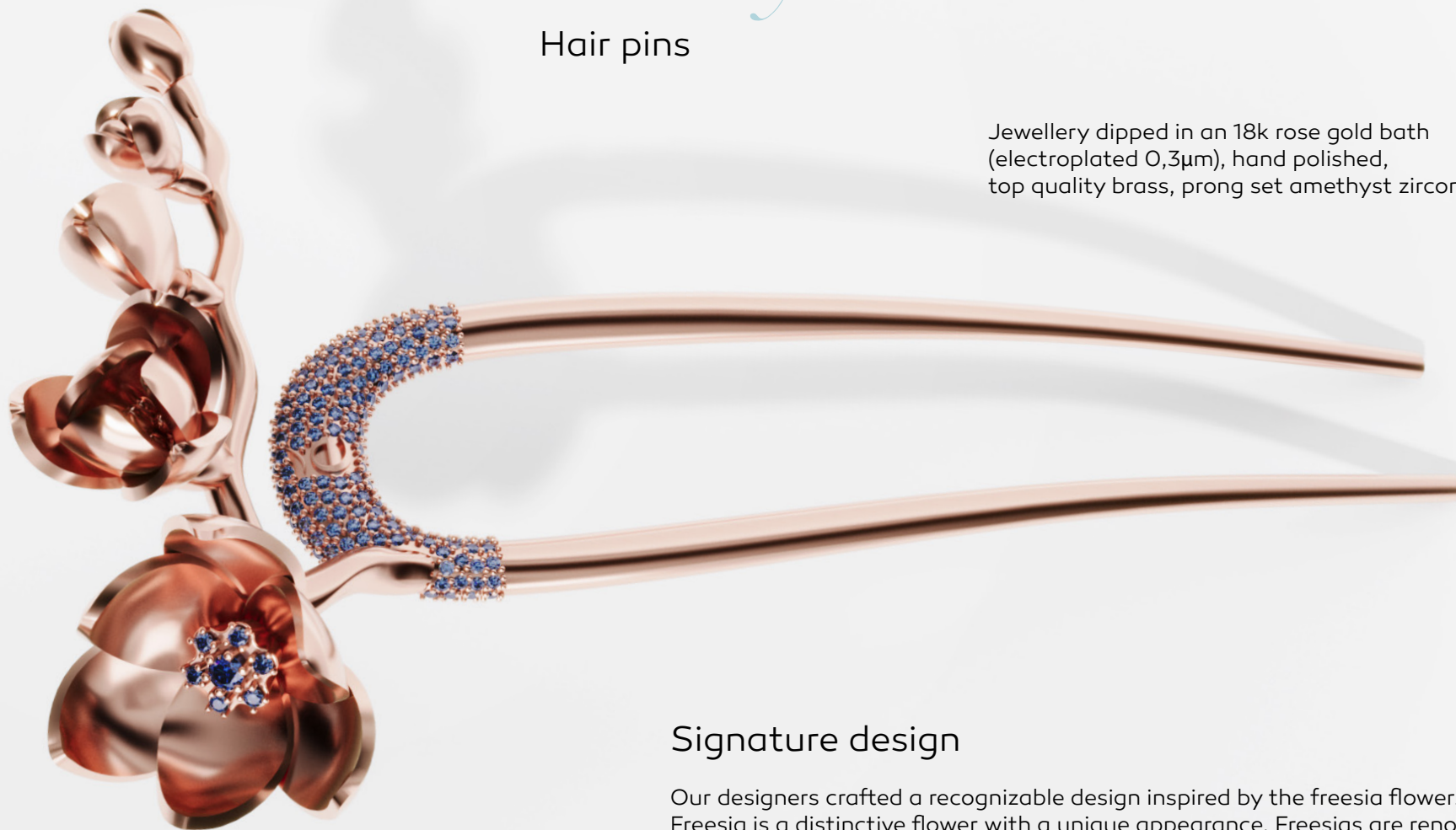
Jewellery dipped in rhodium bath  
(electroplated 0,1 $\mu$ m), hand polished,  
top quality brass, prong set aquamarine zirconia



# *Fancy line*

## Hair pins

Jewellery dipped in an 18k rose gold bath (electroplated 0,3µm), hand polished, top quality brass, prong set amethyst zirconia



## Signature design

Our designers crafted a recognizable design inspired by the freesia flower. Freesia is a distinctive flower with a unique appearance. Freesias are renowned for their unique, elegant appearance, trumpet-shaped flowers, and sweet, citrusy fragrance.



Jewellery dipped in an 18k gold bath  
(electroplated 0,3 $\mu$ m), hand polished,  
top quality brass, prong set green zirconia



Jewellery dipped in rhodium bath  
(electroplated 0,1 $\mu$ m), hand polished,  
top quality brass, prong set aquamarine zirconia



Jewellery dipped in a black ruthenium bath  
(electroplated 0,3 $\mu$ m), hand polished,  
top quality brass, prong set champagne zirconia

## Product Technicalities

Finish: Hand-polished

Assembly: Hand-assembled

Coating: Precious metals electroplating

Stone: Prong set Cubic zirconia

Base material: High-quality brass

Manufacturing method: Investment casting





## Become an éthéré partner

shop-in-shop retailer

franchise partner

exclusive distributor



*Join Our Journey*

[info@etherefrance.com](mailto:info@etherefrance.com)  
[www.etherefrance.com](http://www.etherefrance.com)